

Trauma and Injury Intelligence Group Biannual Bulletin

Furness General Hospital Emergency Department
October 2014 to September 2015

December 2015



Centre for Public Health,
Faculty of Education, Health and Community,
Liverpool John Moores University,
Henry Cotton Campus,
15-21 Webster Street,
Liverpool, L3 2ET

cph.org.uk

0151 231 4500

tiig@ljmu.ac.uk

tiig.info

twitter.com/tiig_cph

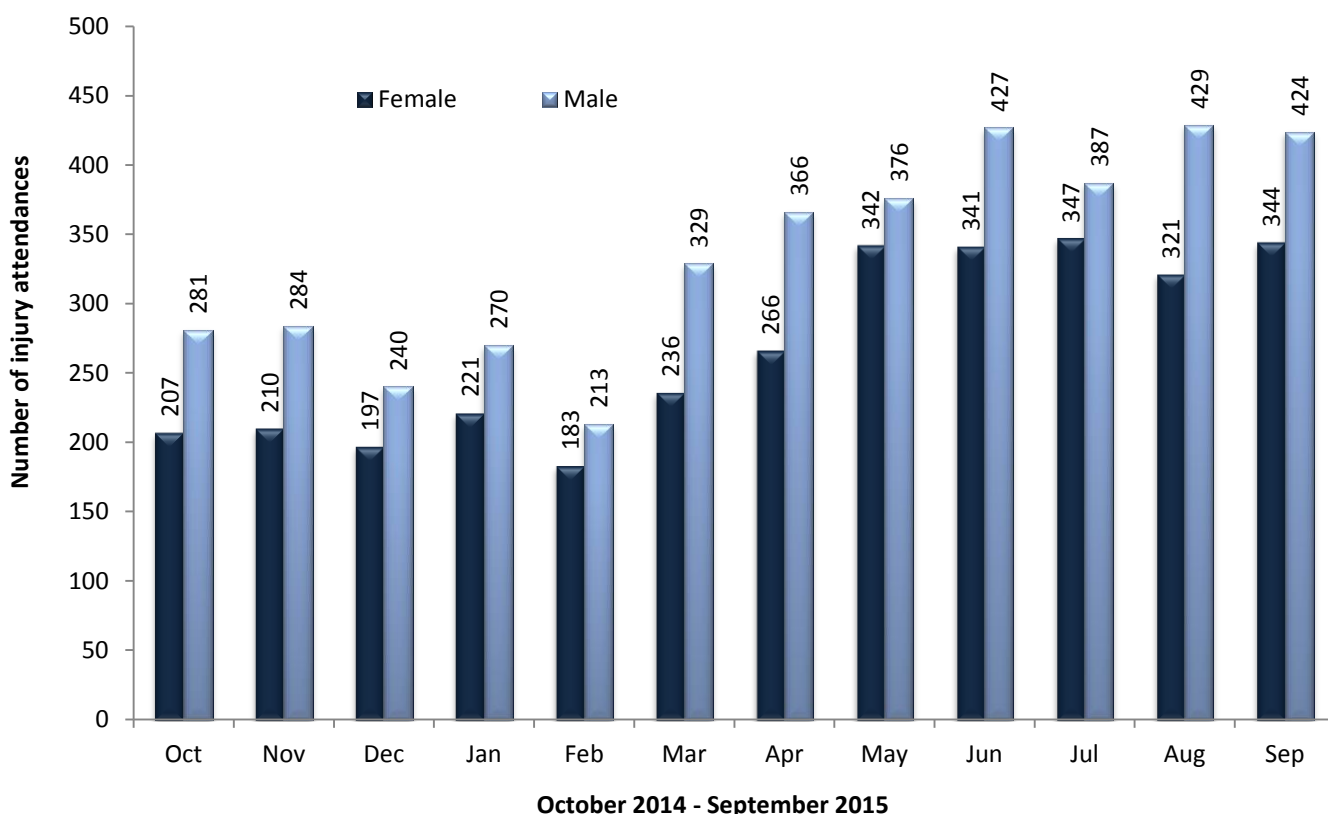
CPH | CENTRE FOR
PUBLIC HEALTH
LIVERPOOL JOHN MOORES UNIVERSITY



ALL INJURY ATTENDANCES

This bulletin provides a breakdown of all injury attendances to Furness General Hospital Emergency Department (ED) between October 2014 and September 2015. In this twelve month period there were 7,242 injury attendances to the ED. The months with the highest number of attendances, calculated as a daily average, were June and September 2015 (26 per day), while December 2014 and February 2015 had the fewest (14 each per day; figure 1). There were more male (56%) than female attendances to the ED between October 2014 and September 2015 (n=4,026; figure 1).

Figure 1: ED attendances by gender and month, October 2014 to September 2015



Three in ten (30%) attendees were aged between 30 and 59 years (n=2,208), 26% were aged between 15 and 29 years (n=1,915) and 23% were aged 60 years and over (n=1,640; figure 2).

Figure 2: ED attendances by age group and month, October 2014 to September 2015

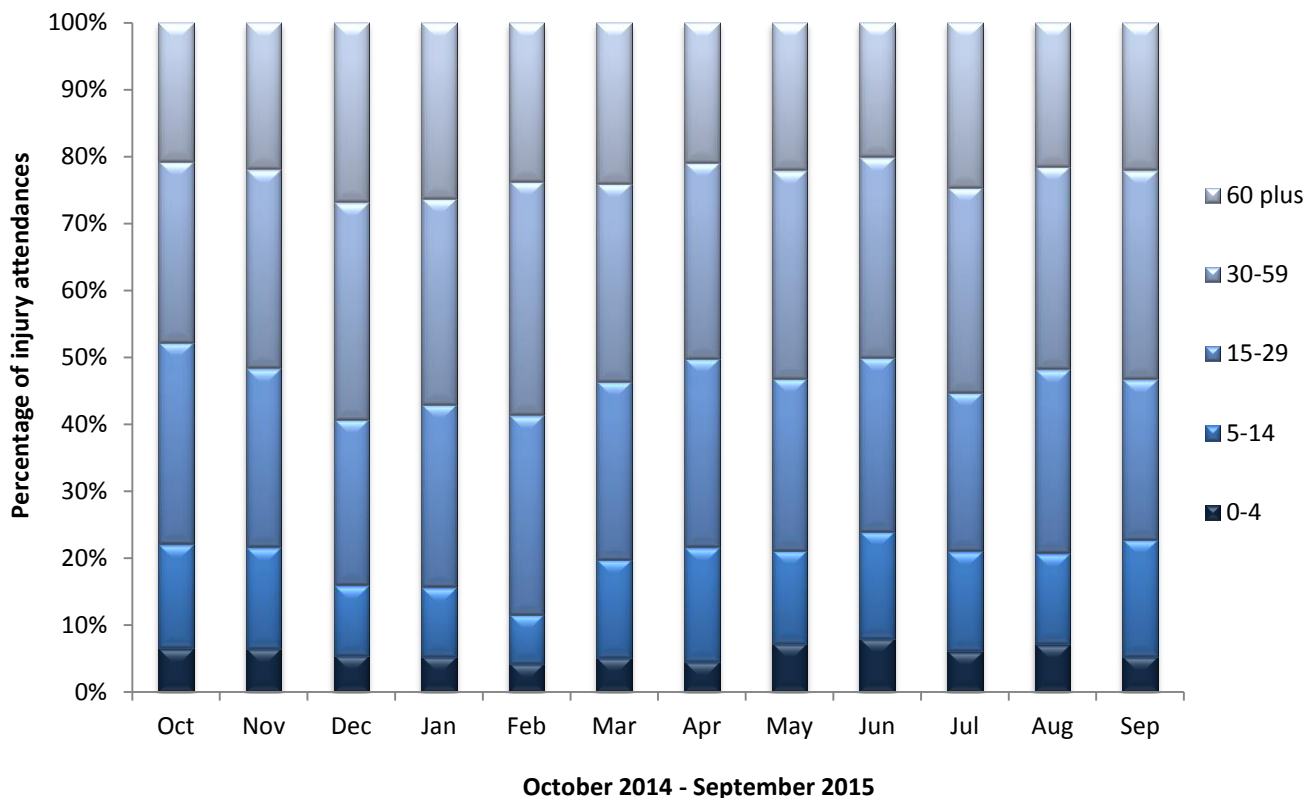


Table 1 shows the injury group of attendees between October 2014 and September 2015. Just under three quarters (74%) attendances were categorised as ‘other’ injuries (n=5,351). Sports injuries accounted for 11% of attendances (n=823) and 7% were due to road traffic collisions (n=526). Deliberate self-harm (n=298) and assaults (n=244) each accounted for 4% and 3% of injury attendances respectively.

Table 1: ED attendances by injury group and month, October 2014 to September 2015[^]

Injury group	Oct	Nov	Dec	Jan	Feb	Mar	Apr	May	Jun	Jul	Aug	Sep	Total	%
Other injury	314	355	318	351	275	412	453	556	610	581	583	543	5351	74%
Sports injury	85	49	42	56	45	67	105	63	60	61	61	129	823	11%
Road traffic collision	47	47	32	39	38	40	30	49	50	40	58	56	526	7%
Deliberate self-harm	27	26	24	28	20	26	21	21	30	27	20	28	298	4%
Assault	15	17	21	17	18	20	23	29	18	26	28	12	244	3%
Total	488	494	437	491	396	565	632	718	768	735	750	768	7242	100%

[^] Due to low numbers, firework injuries have been included in the ‘other’ injury category (n=15).

The referral source to the ED is displayed in table 2. The majority (88%) were self-referred (n=6,401), 7% were referred by their General Practitioner (GP; n=499) and 5% were referred by the emergency services (n=337).

Table 2: ED attendances by referral source and month, October 2014 to September 2015¹

Referral source	Oct	Nov	Dec	Jan	Feb	Mar	Apr	May	Jun	Jul	Aug	Sep	Total	%
Self-referral	441	440	382	433	347	483	563	652	667	650	662	681	6401	88%
General medical practitioner	30	34	41	40	31	62	47	45	52	35	40	42	499	7%
Emergency services	17	20	<15	<20	18	20	22	<20	49	50	48	45	337	5%
Police	0	0	0	***	0	0	0	***	0	0	0	0	***	0%
Work	0	0	***	0	0	0	0	0	0	0	0	0	***	0%
Total	488	494	437	491	396	565	632	718	768	735	750	768	7242	100%

Table 3 displays the incident location. Over two fifths (44%) of incidents were recorded as occurring in 'other' locations (n=3,218). A quarter (25%) occurred in a public place (n=1,780) and just over one in five (21%) occurred in the home (n=1,527).

Table 3: ED attendances by incident location and month, October 2014 to September 2015¹

Incident location	Oct	Nov	Dec	Jan	Feb	Mar	Apr	May	Jun	Jul	Aug	Sep	Total	%
Other	221	210	206	251	204	286	326	348	299	256	290	321	3218	44%
Public place	131	111	92	107	89	115	143	169	191	223	219	190	1780	25%
Home	87	113	100	92	66	99	107	127	184	198	200	154	1527	21%
Work	22	24	18	23	<25	34	31	42	48	39	<45	44	387	5%
Educational establishment	27	36	21	18	<20	31	25	32	46	19	***	59	330	5%
Total	488	494	437	491	396	565	632	718	768	735	750	768	7242	100%

The discharge destination for ED attendances is displayed in table 4. Over a third (35%) were discharged from hospital with no follow-up treatment required (n=2,507), while just under a quarter (23%) were discharged from hospital with follow-up treatment to be provided by a GP (n=1665). Under one fifth (18%) were admitted to hospital (n=1,289) and 10% were referred to the fracture clinic (n=704).

Table 4: ED attendances by discharge destination and month, October 2014 to September 2015^{1,2}

Discharge destination	Oct	Nov	Dec	Jan	Feb	Mar	Apr	May	Jun	Jul	Aug	Sep	Total	%
Discharged - no follow-up	201	189	147	162	143	187	191	232	286	253	273	243	2507	35%
Discharged - follow-up care by GP	85	98	75	94	84	135	190	174	174	172	195	189	1665	23%
Admitted	85	91	106	117	83	126	98	118	116	107	119	123	1289	18%
Fracture clinic	43	43	41	52	36	39	64	85	73	78	63	87	704	10%
Follow-up within ED	21	35	27	23	19	21	33	43	52	43	33	44	394	5%
Out-patient clinic	22	19	14	23	14	30	26	22	33	31	30	30	294	4%
Left before being treated	17	9	9	10	6	14	10	18	15	20	14	18	160	2%
Transferred to other HCP	<10	5	7	***	7	8	14	15	13	18	14	19	126	2%
Other health care professional	5	***	7	***	***	***	***	8	***	7	***	7	57	1%
Other	***	***	***	***	***	***	0	***	***	6	***	<10	31	0%
Left having refused treatment	0	0	0	***	0	0	***	***	***	0	***	***	10	0%
Died in department	0	***	***	0	0	0	***	0	0	0	***	0	5	0%
Total	488	494	437	491	396	565	632	718	768	735	750	768	7242	100%

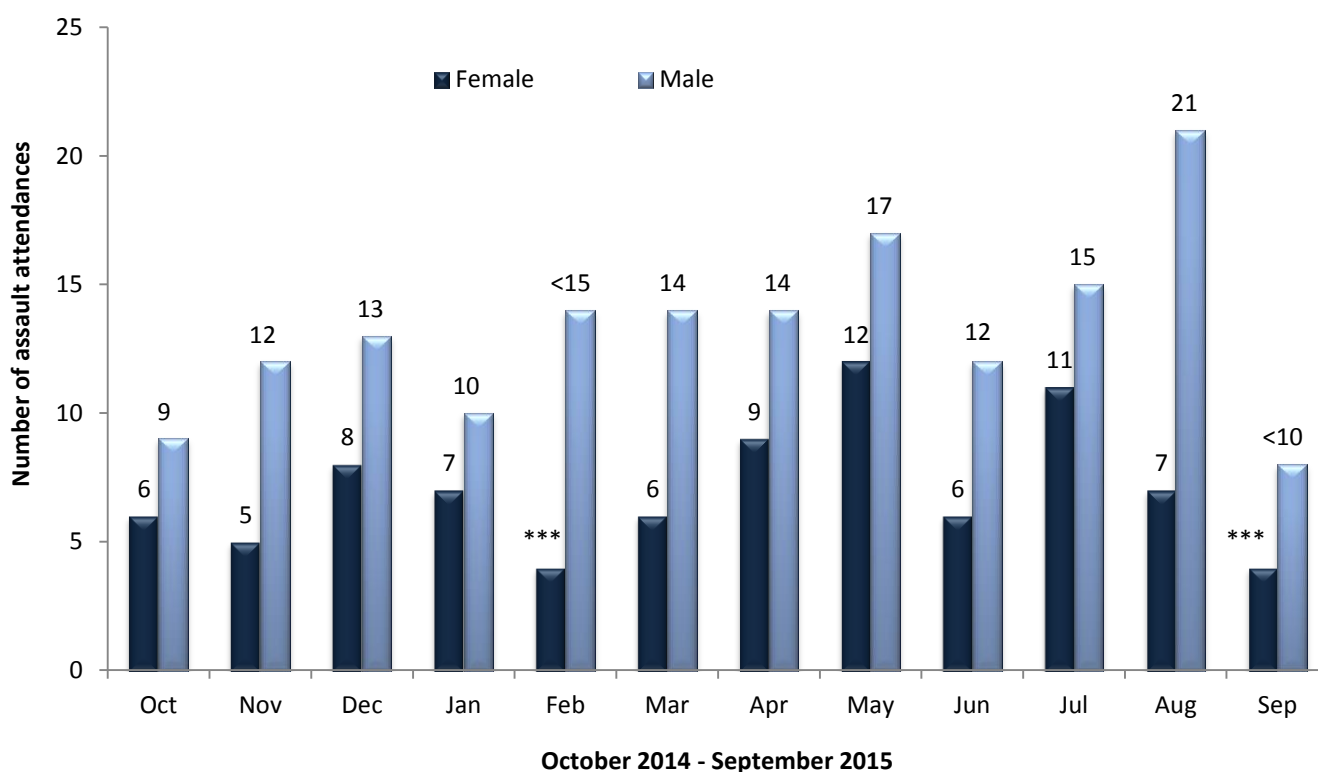
¹ Please note that all numbers less than five have been suppressed (***) in line with patient confidentiality. If there is only one number less than five in a category then two numbers have been suppressed to prevent back calculations from totals.

² HCP = Health care provider

ASSAULT ATTENDANCES

Between October 2014 and September 2015 there were 244 assault attendances to Furness General Hospital ED. The month with the highest number was May 2015 with 29 assault attendances (figure 3). Just under two thirds (65%) of attendees presenting to the ED with assault-related injuries were male (n=159; figure 3).

Figure 3: ED assault attendances by gender and month, October 2014 to September 2015¹



Just over half (51%) were aged between 15 and 29 years (n=125) while under two fifths (38%) were aged between 30 and 59 years (n=92; table 5).

Table 5: ED assault attendances by age group and month, October 2014 to September 2015^{§,1}

Age group	Oct	Nov	Dec	Jan	Feb	Mar	Apr	May	Jun	Jul	Aug	Sep	Total	%
5-14	***	***	***	***	0	<10	***	***	0	***	***	0	17	7%
15-29	7	7	11	10	11	7	14	17	9	14	12	6	125	51%
30-59	<10	<10	7	<10	7	7	6	<15	<10	<10	11	<10	92	38%
60 plus	0	***	***	0	0	***	***	0	***	***	***	***	10	4%
Total	15	17	21	17	18	20	23	29	18	26	28	12	244	100%

[§] There were no assault attendances in the 0-4 years category.

The assault location is shown in table 6. Just over half (51%) of incidents occurred in a public place (n=125) and under a quarter (23%) occurred in the home (n=56).

Table 6: ED assault attendances by incident location and month, October 2014 to September 2015¹

Incident location	Oct	Nov	Dec	Jan	Feb	Mar	Apr	May	Jun	Jul	Aug	Sep	Total	%
Public place	9	10	14	6	9	9	12	15	9	15	17	0	125	51%
Home	***	***	5	***	6	5	6	6	5	6	***	5	56	23%
Other	***	***	***	5	***	***	***	<10	***	***	5	6	41	17%
Work	***	***	***	***	0	***	***	***	***	***	***	0	17	7%
Educational establishment	0	0	0	0	***	***	0	0	0	0	0	0	5	2%
Total	15	17	21	17	18	21	23	29	18	26	28	11	244	100%

Table 7 displays the disposal method of assault attendances. Forty five per cent required follow-up treatment (n=109) and 41% were discharged from hospital with no follow-up treatment required (n=100). Five per cent were admitted to hospital (n=12).

Table 7: ED assault attendances by disposal method and month, October 2014 to September 2015 Error! Bookmark not defined.

Disposal	Oct	Nov	Dec	Jan	Feb	Mar	Apr	May	Jun	Jul	Aug	Sep	Total	%
Follow-up	***	<10	6	10	10	9	10	17	<10	12	<15	<10	109	45%
Discharged	8	9	11	***	<10	<10	7	9	10	10	13	***	100	41%
Other	***	***	***	***	***	***	***	***	***	***	***	***	23	9%
Admitted	***	0	***	0	***	***	***	***	0	***	0	***	12	5%
Total	15	17	21	17	18	20	23	29	18	26	28	12	244	100%